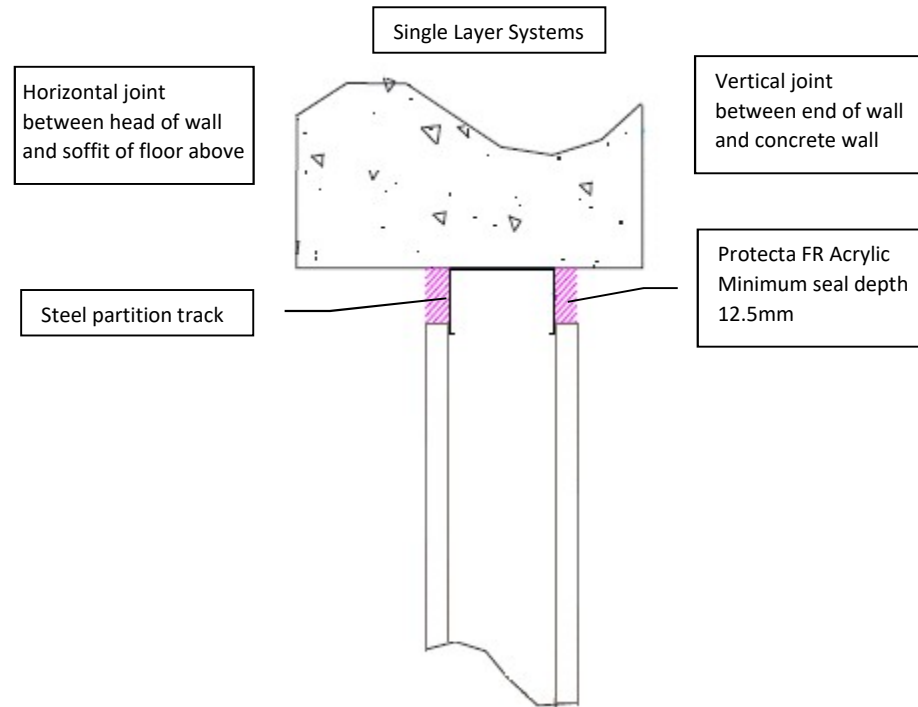


Installation Instructions

1. Before installing Protecta® FR Acrylic ensure that the surface of all surrounding construction is free from all loose contaminants, dust and grease.
2. Where Protecta® FR Acrylic is to be installed against surfaces that cannot tolerate direct contact; appropriate surface preparation should be made (contact Polyseam for guidance in these cases). For paints sensitive to sealing compounds, priming with a PVA primer is recommended.
3. When installing the sealant in gypsum boards, the exposed edges of the board can be wetted with water, or Protecta® FR Acrylic diluted with water to prime the surfaces helping adhesion and preventing excessive joint shrinkage.
4. Fill the gap or joint with Protecta® FR Acrylic to the required depth.
5. Apply the sealant generously to prevent air bubbles. Finish the bead with a moist spatula, pallet knife or brush.
6. Protecta® FR Acrylic can be over-painted with most emulsion or alkyd (gloss) paints.

Protecta FR Acrylic - Plasterboard Wall Head of wall to soffit of concrete floor, or Vertical end of wall to concrete wall



System /FPA Register ID# FC110

Products	Protecta FR Acrylic
Application	Fire rated linear seals in flexible walls
Construction	Minimum wall thickness of 75 mm and comprise steel studs or timber studs lined on both faces with minimum 1 layer of 12.5 mm thick boards.

Fire & Sound classification

Both sides in horizontal seals with maximum gap width 25mm FRR -/60/45

Both sides in vertical seals with maximum gap width 15mm FRR -/60/45

ZERO smoke leakage up to 200Pa

Sound reduction (seal only) STC 62

As a part of our policy of on-going product development and testing, we reserve the right to modify, alter or change product specifications without giving notice. All information contained in this document is given in good faith and is provided for guidance only. Any drawings provided are for illustrative purposes only. As Polyseam has no control over the methods or competence of installation and of prevailing site conditions, no warranties, expressed or implied, is intended to be given as to the actual performance of the product mentioned or referred to herein and no liability whatsoever will be accepted for any loss, damage or injury arising from the use of the information given.

For all technical details on the products specified please refer to the technical data sheets that can be found on www.firestopcentre.co.nz

Signed and approved:

Sheet size: **A4**
Drawn date & no: 24/5/21

Scale: **NTS**
Drawn by: **K.B**



Protecta®

Polyseam Ltd, 15 St Andrews Road,
Huddersfield, West Yorkshire, HD1 6SB
Tel: +44 (0) 148 4421036
Email: post.uk@polyseam.com